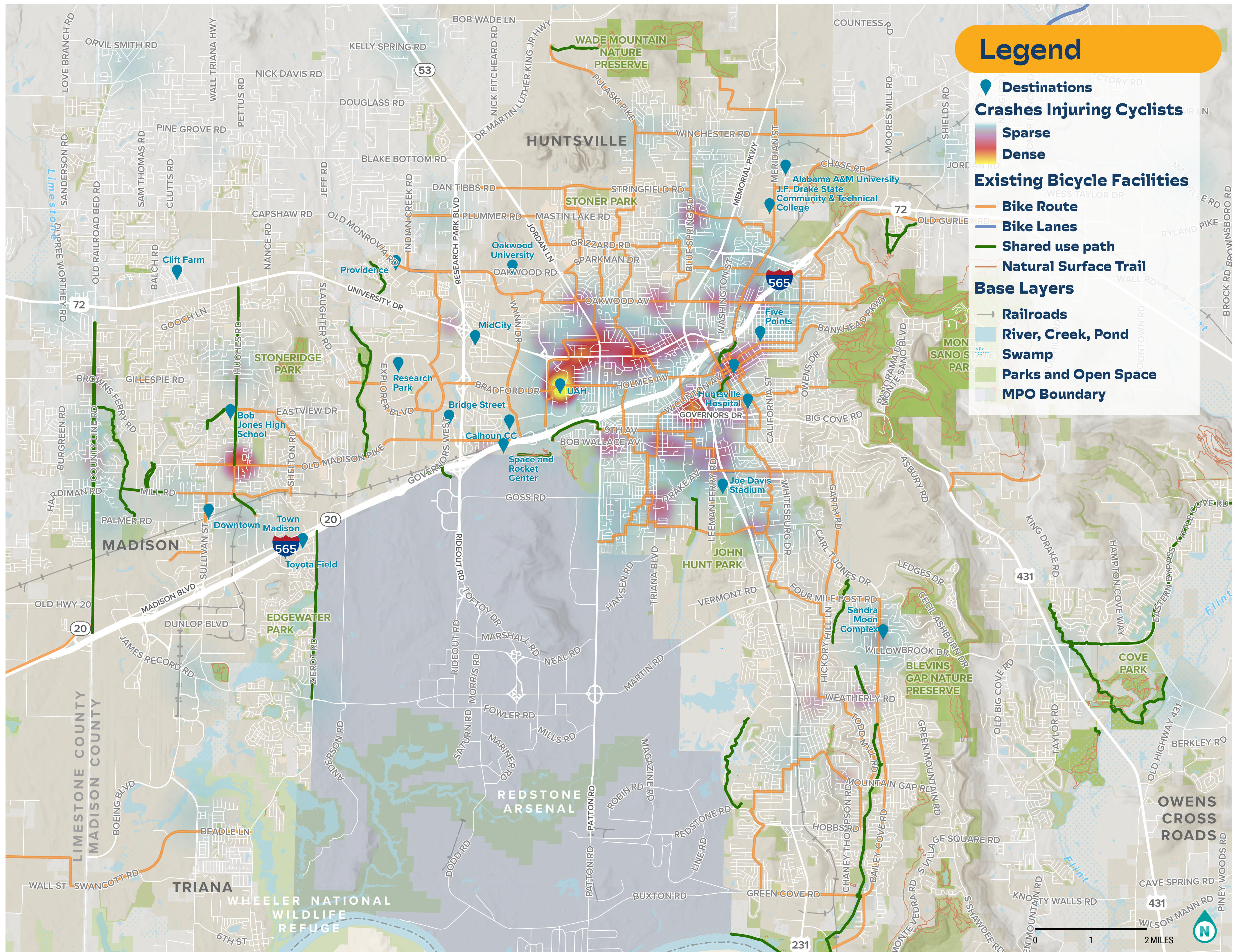




Huntsville MPO Bicycle Plan

Addressing Safety Concerns

Improving safety for bicyclists is a main priority for the bicycle plan. Identifying where bicycle crashes have occurred and understanding the conditions and contributing factors is the first step to making our roads safer to bike. The project team gathered crash data from 2016 to 2022 to identify crash locations and density. As seen on this map, some of the most severe crashes are happening on busy roads and at intersections.



Cyclist Injuries

77

In MPO Area
(2016–2022)



Total Crashes with Bikes

198

In MPO Area
(2016–2022)

To learn more about the project, visit:
huntsvillempo.org/bike-rocket-city



Huntsville Area
Metropolitan Planning
Organization



Take the Survey

surveymonkey.com/r/HSVBikePlan



Comment on the Map

huntsville.altaplanning.cloud/

